

# CHINESE ARMED FORCES ORDER OF BATTLE (ORBAT)

<b>CHINESE ARMED FORCES ORDER OF BATTLE (ORBAT)</b>	<b>1</b>
Composition of Group Army : -	4
Composition of Heavy Combined Arms Brigade : -	4
Composition of Light Combined Arms Brigade	5
Composition of Mechanised Infantry Brigade	5
Composition of Independent Artillery Brigade	5
Composition of Independent Air Defence Brigade	5
Composition of Infantry Squads.	5
Battalion Command	7
Brigades	7
THEATER COMMANDS	8
WESTERN THEATER COMMAND Guangzhou, Guangdong	8
76th Group Army, Xining, Qinghai Province (Former 21st Group Army)	8
77th Group Army, Changzhou City, Sichuan. (Former 13th Group Army)	9
4th Motorised Infantry Division, Xinjiang MD	10
6th Highland Mechanised Infantry Division, Depsang	10
8th Motorised Infantry Division, Xinjiang MD	10
11th Motorised Infantry Division, Xinjiang MD	11
No naval fleet	11
Air Assets	11
Air Bases	11
TIBET MILITARY DISTRICT	11
15th Airborne Corps	11
52nd Mountain Motorised Infantry Brigade, Nyingchi (4600 troops)	12
53rd Mountain Motorised Infantry Brigade, Lhasa/Nyingchi? (4600 troops)	12
54th Mechanised Infantry Brigade, Lhasa (3000 troops)	12
308th Artillery Brigade (3000 troops)	13
Independent Battalions ??	13
SOUTHERN THEATER COMMAND. Guangzhou, Guangdong	13
74th Group Army (Former 41st Group Army)	13
75th Group Army (Former 42nd Group Army)	14
South Sea Fleet (Naval)	14
Air Assets	15
Air Bases	16
CENTRAL THEATER COMMAND. Beijing	16

81st Group Army (Former 65th Group Army)	16
82nd Group Army (Former 38th Group Army)	17
83rd Group Army (Former 54th Group Army)	17
No naval fleet	17
Air Assets	17
Air Bases	18
NORTHERN THEATER COMMAND. Shenyang, Liaoning	18
78th Group Army (Former 16th Group Army)	18
79th Group Army (Former 39th Group Army)	18
80th Group Army (Former 26th Group Army)	18
North Sea Fleet	18
Air Bases	19
Air Assets	19
EASTERN THEATER COMMAND. Nanjing, Jiangsu	20
73rd Group Army (Former 31st Group Army)	20
71st Group Army (Former 12th Group Army)	20
72nd Group Army (Former 1st Group Army)	20
East Sea Fleet (Naval)	21
Air Assets	21
Air Bases	22
PLA ROCKET FORCE	22
MISSILE BASES	22
CHINESE MISSILES	24
PLA AIR FORCE ORBAT & STRUCTURE	26
AIR COMBAT BRIGADE STRUCTURE	26
Changes in 2017 and Later	27
PLAAF AIRCRAFT INVENTORY	29
STRATEGIC SUPPORT FORCE	30
BASIC STRUCTURE OF SSF	31
SSF Space Systems Department Units	31
SSF Network Systems Departments Units	32
LOGISTICS	32
REFERENCES:	33

In 2017, 18 Group Armies (GA, similar to Corps in other militaries) were reorganised into 13 GAs. Air Force, Navy, Rocket forces are being included in these new GAs under new designations. Previously 7 Military Regions(MR) have been converted in to five Theater

Commands (TC) Northern, Southern, Central, Eastern and Western. Space, Cyber and Electronic warfare has been consolidated under Strategic Support Force.

MRs were responsible for a wide range of combat and non-combat functions such as management, command, peacetime operations and force building. Additionally, in case of a war, command staff drawn from Beijing would be in command. New TCs are responsible for only training and joint operations. Rest of the functions have been given to other organisations. Among a few other things, this allows the Central Military Commission (CMC) to have direct authority over Chinese armed forces. Many of these reforms seem to be based on changing US war doctrines. How will Chinese manage remains to be seen. CMC now has:

### **6 Departments:**

1. **Logistical Support:** Overall logistics command
2. **Political Work:** Political control through commissars.
3. **Joint Staff:** Operational planning, logistics and strategy,
4. **Training & Administration:** Training command.
5. **Equipment Development:** Technological R&D, acquisition & maintenance.
6. **National Defence Mobilisation Development:** Management & mobilisation of reserve forces.

### **3 Commissions**

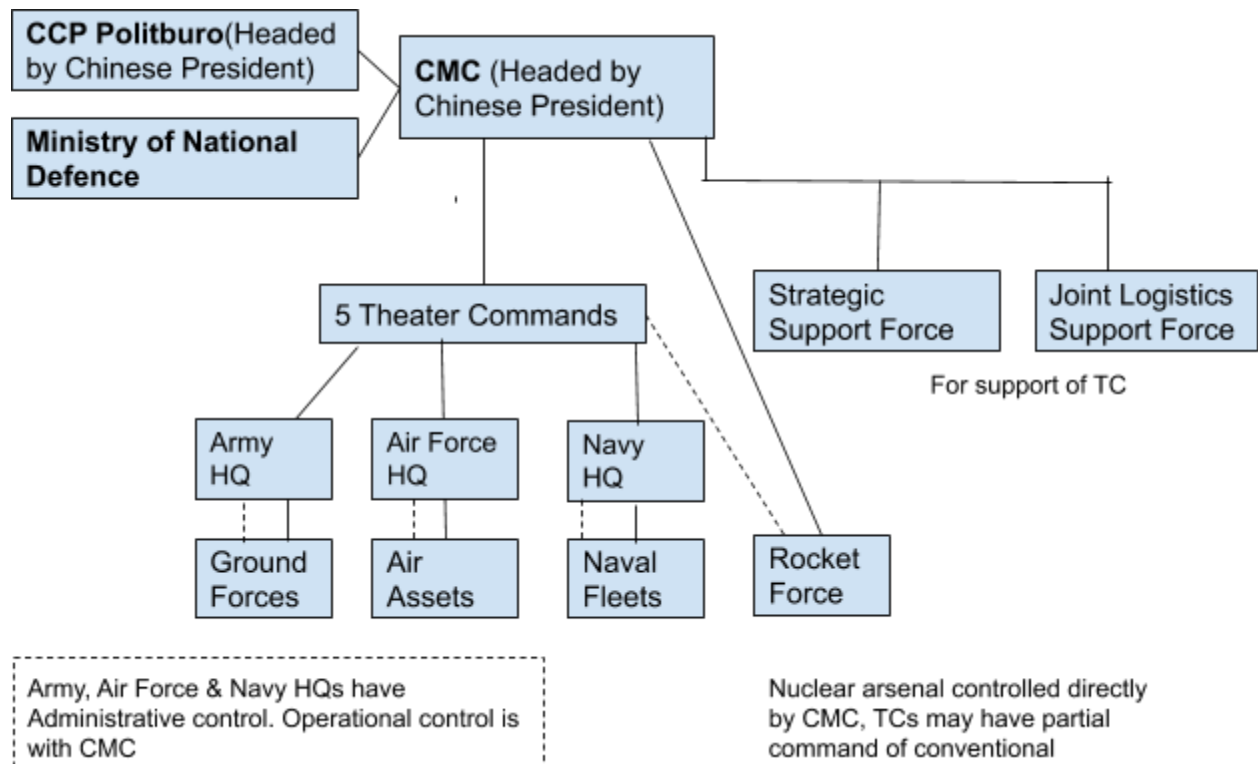
1. **Politics & Law:** Military law & governance.
2. **Science & technology:** Development and liaising with civil scientific fields
3. **Discipline Inspection:** Organisational cohesiveness.

### **6 Offices**

1. General Office
2. Administration
3. Auditing,
4. International Cooperation
5. Reform & Organisation Structure
6. Strategic Planning

Chairman of CMC, who is also the President of China Xi Jinping now has direct command and leadership over the entirety of Chinese armed forces through this structure.

Under the new structure, the Armies will have Combined Arms Brigades and a few support brigades. Each TC has ground and air forces under its command in addition to conventional missile units. Northern, Eastern and Southern commands also have naval units



#### Composition of **Group Army** : -

- 6 Combined Arms Brigades
- Six Support Brigades
  - 1 Artillery
  - 1 Air Defense
  - 1 Army aviation or Air Assault
  - Special Operations
  - Engineer
  - Service Support

Combined Arms Brigade (CBA) are classified as light (mountain or light mechanised) or heavy (mechanised infantry or armoured). There are 4 types of CBAs, namely HEAVY, MEDIUM, LIGHT & AMPHIBIOUS.

#### Composition of **Heavy Combined Arms Brigade** : -

Total of 5000-6000 soldiers

- 4 Combined Arms Battalions each with 2 tank companies, 2 mechanised infantry companies (plus artillery and support??)
- 1 Artillery Battalion
- 1 Air Defense Battalion
- 1 Combat Support Battalion

- 1 Logistic Support Battalion
- 1 Reconnaissance Battalion
- 1 Guard & Service Company

#### Composition of **Light Combined Arms Brigade**

- 3 Motorised Light Infantry Battalions (Dongfeng EQ-2102 & MV-3 trucks)
- 1 High Mobility Infantry Battalion (Warrior KSK 4x4 armoured utility vehicle, Humvee copy)
- 1 Artillery Battalion
- 1 Air Defense Battalion
- 1 Combat Support Battalion
- 1 Logistic Support Battalion??
- 1 Reconnaissance Battalion
- 1 Guard & Service Company

#### Composition of **Mechanised Infantry Brigade**

- 4 Mechanised Battalions
- Tank Battalion (35 Type-99 tanks)
  - 11 tanks each in 3 tank companies + 2 Command tanks in battalion HQ
- Artillery Battalion (18 122mm PLZ-07B SPG)
- Engineer Battalion
- Signals Battalion

#### Composition of **Independent Artillery Brigade**

- 2 Battalions (36 units) truck mounted PCL-181 155/52mm howitzers.
- 2 Battalion 36 units) PHL-03 300mm MLRS

#### Composition of **Independent Air Defence Brigade**

- 1 Battalion (24 units) 35mm towed AA
- 12 FM-90 SAM

#### Composition of **Infantry Squads.**

Each platoon has 3 squads. Each squad forms two fire teams of varying fire power depending upon composition and loadout.

#### **Heavy Infantry CBAs**

VEHICLES: ZBD-4A or Type-86 ICV

SQUAD : 9 (2 vehicle crew, rest dismounts)

1. 1 Sergeant or Staff Sergeant:QBZ-95 rifle. Can be vehicle commander and may not always dismount.
2. 1 2nd IC: QBZ-95 rifle. May have QLG-10 Grenade launcher or QBS-9 shotgun.
3. 2 Light Machine Gunners: QBB-95. Part of two fireteams
4. 1 Designated Marksman: QBU-88 (Equivalent to Dragunov).
5. 2 Riflemen: QBZ-95
6. Driver & Gunner: QSZ-92 pistol or QBZ-95 carbine

### **Medium Infantry CBAs**

VEHICLES:ZBL-8 (8 wheeled) ICVs & supporting vehicles

SQUAD : 9 (2 vehicle crew , rest dismounts)

1. 1 Sergeant or Staff Sergeant:QBZ-95 rifle. Can be vehicle commander and may not always dismount.
2. 1 2nd IC: QBZ-95 rifle. May have QLG-10 Grenade launcher or QBS-9 shotgun.
3. 1 Light Machine Gunner: QBB-95.
4. 1 Designated Marksman: QBU-88 (Equivalent to Dragunov).
5. 1 Rocket Gunner: PF-98A rocket. 1 Riflemen in support role, may carry 2 rocket rounds.
6. 2 Riflemen: QBZ-95
7. Driver & Gunner: QSZ-92 pistol or QBZ-95 carbine

### **Army's Marine Infantry CBAs**

Heavy CBA with amphibious capabilities..

VEHICLES: ZBD-5 Amphibious ICV

SQUAD : 9 (2 vehicle crew , rest dismounts)

1. 1 Sergeant or Staff Sergeant:QBZ-95 rifle. Can be vehicle commander and may not always dismount.
2. 1 2nd IC: QBZ-95 rifle. May have QLG-10 Grenade launcher or QBS-9 shotgun.
3. 2 Light Machine Gunners: QBB-95. Part of two fireteams  
OR 1 Light Machine Gunner: QBB-95 and 1 Rocket Gunner: PF-98A rocket or QLZ-87 Automatic Grenade Launcher. 1 Riflemen in support role, may carry 2 rocket rounds.
4. 1 Designated Marksman: QBU-88 (Equivalent to Dragunov).
5. 2 Riflemen: QBZ-95
6. Driver & Gunner: QSZ-92 pistol or QBZ-95 carbine

### **Light Infantry CBAs**

High mobility, quick response units

VEHICLES: 3.5 ton trucks, 4x4 vehicles

SQUAD : 9 (1 driver who may or may not operate a mounted weapon)

1. 1 Sergeant or Staff Sergeant:QBZ-95 rifle. Can be vehicle commander and may not always dismount.
2. 1 2nd IC: QBZ-95 rifle. May have QLG-10 Grenade launcher or QBS-9 shotgun.

3. 1 Light Machine Gunner: QBB-95.
4. 1 Designated Marksman: QBU-88 (Equivalent to Dragunov).
5. 1 Rocket Gunner: PF-98A rocket. 1 Rifleman in support role, may carry 2 rocket rounds.
6. 3 Riflemen: QBZ-95
7. Driver: QSZ-92 pistol or QBZ-95 carbine

### **Navy's Marine Infantry CBAs**

VEHICLES: Lynx 8x8 ATV and MI-17 helicopters

SQUAD : 9

1. 1 Sergeant or Staff Sergeant:QBZ-95 rifle. Can be vehicle commander and may not always dismount.
2. 1 2nd IC: QBZ-95 rifle. May have QLG-10 Grenade launcher or QBS-9 shotgun.
3. 1 Light Machine Gunner: QBB-95.
4. 1 Designated Marksman: QBU-88 (Equivalent to Dragunov).
5. 1 Rocket Gunner: PF-98A rocket. 1 Rifleman in support role, may carry 2 rocket rounds.
6. 4 Riflemen: QBZ-95

### **Battalion Command**

After discarding Soviet system of command in which regimental HQs did most of planning and staff work for battalions. PLA has now eliminated regiments from chain of command. Battalions will now be capable of planning and executing operations independently. Battalion Commander directly commands a deputy battalion commander, master sergeant, chief of staff and four non-commissioned officers.

Further, a battalion will have following staff personnel:

- Operations and Reconnaissance Officer
- Artillery and engineering officer??
- Communications officer
- Support Officer

### **Brigades**

- **Army Aviation Brigades (AAB): 15.** Each GA and Xinjiang and Tibet MDs are assigned an AAB. Personnel and aircraft from 7 brigades, 5 regiments and new equipment were used for their creation.
- **Special Operations Forces Brigades (SOFB) : 16.** Created from existing 9 SOFBs, 2 regiments and new personnel.
- **Support Brigades: 87**

- **Marine Brigades: 6.** One motorised infantry brigade in Shandong, coastal defense units in Fujian, Shandong were consolidated into 4 new marine brigades. South Sea Fleet under Southern TC already had two MBs. Now Northern and Eastern TCs have two new MBs each.

## **THEATER COMMANDS**

- **WESTERN THEATER COMMAND** Guangzhou, Guangdong

### **AREA OF OPERATIONS:**

LAND: Sichuan, Chongqing and Tibet. India, Kyrgyzstan, Kazakhstan and Tajikistan borders.

MARITIME: None. Naval conflict would be handled through Southern?? TC's Naval Fleet.

### **NOTES:**

Major focus on India. This seems to be the only TC which still retains some divisions. 2 to 2.35 lakh troops from border defence units and regular army.

5-6 CBAs deployed in Depsang, Galwan, Hot Spring, Pangong Tso, Demchok and Chumar sectors.

Tibet Military Region (TMR) comes under PLA's Ground Forces Command instead of Western TC

- **76th Group Army, Xining, Qinghai Province (Former 21st Group Army)**

6 Combined Arms Brigades & 6 Support Brigades. 45000 to 6000 soldiers in Qinghai, Gansu and Ningxia.

**Chief :** Major General Yang Yi

**2nd IC:** Major General Zhou Jianguo

**Political Commissar:** Lieutenant General Zhang Hongbing

### **EQUIPMENT:**

- Tanks: Type-99A
- Helicopters: WZ-10 Attack, Mi-17, Z-18
- IFV: ZBD-04A
- Artillery:
  - PLL-09 (Type-09) 122 mm SPhowitzzer on ZBL-08 (8 wheels Type-08 IFV)
  - PCL-09 (Type-96) 122 mm SP Mortars,
  - PLL PHZ-11 122 mm MLRS, 300 mm MLRS



- Air Defence: PGZ-07/Type-7 SP AAA twin 35 mm, Type 95 SP AAA quad 25 mm
- Anti-Tank: AFT-10 NLOS ATGM

**UNITS:**

- 14th Heavy Combined Arms Brigade?? or
- 17th Combined Arms Brigade
- 56th Combined Arms Brigade
- 62nd Heavy Combined Arms Brigade
- 149th Combined Arms Brigade
- 182nd Combined Arms Brigade
- 76th Special Operations Brigade
- 12th Armoured Brigade
- 76th Artillery Brigade.
- 76th Air Defence Brigade.
- 76th or 77th Special Operations Brigade “Tiger”?? (500 troops)
- Engineer Brigade
- Army Aviation Brigade

○ **77th Group Army, Changzhou City, Sichuan. (Former 13th Group Army)**

6 Combined Arms Brigades & 7 Support Brigades??

**Chief:** Maj Gen Lin Huomao

**2nd IC:** Major General Li Zhonglin

**Political Commissar:** Major General Li Zehua Deputy

**His 2nd IC:** Major General Gao Daguang

**EQUIPMENT:**

- Tanks: Type-99A
- Helicopters: WZ-10 Attack, Mi-17, Z-18??
- IFV: ZBL-8 & Support vehicles on same platform
- Artillery: Truck Type-96 122 mm Self Propelled Mortars, Type-05 120 mm (WZ-551 6 wheeled IFV) and 122 mm truck mounted howitzers, PHZ-11 122 mm MLRS
- Air Defence: HQ-7B SAM
- Anti-Tank: AFT-10 NLOS ATGM

**UNITS:**

- 139th Heavy Combined Arms Brigade
  - 3-4 Infantry Battalions
  - ??
- 181st Combined Arms Brigade

- 4 Infantry Battalions
    - 7th Air Defence Battalion (HQ-7B SAM)
    - 6th Artillery Battalion
    - ??
  - 39th Medium Combined Arms Brigade
  - 40th Mountain Combined Arms Brigade
  - 55th Light Combined Arms Brigade
  - 150th Light Combined Arms Brigade
  - 181st Medium Combined Arms Brigade
  - 77th Army Aviation Brigade
  - 77th Special Operations Brigade (500 troops)
  - 77th Artillery Brigade
  - 77th Air Defence Brigade
  - 77th Service Support Brigade
  - 77th Engineering Brigade
- **4th Motorised Infantry Division, Xinjiang MD**

13000 troops.

Will have Special Operations Brigade, Artillery Brigade and 3-4 infantry brigades
  - **6th Highland Mechanised Infantry Division, Depsang**
    - 7th Mechanised Infantry Regiment/4 battalions
    - 18th Mechanised Infantry Regiment
    - ?? Armoured Regiment
    - Field Artillery Regiment
    - Combat Engineer Battalion
    - EW Battalion
    - CBRN Defence Battalion
    - Infantry Company & AD Platoon for HQ security
    - Reconnaissance Battalion (18 ZBD-04A ICV with AFT-10 ATGM)
    - AAA Regiment
      - Battalion of 24 GZ-09 35mm SPG
      - Battalion of 18 HQ-17 SAM
      - 6 FN-6 MANPADS
    - Aviation Regiment (Squadron of 6 each, Harbin Z-9 and Mi-17 helicopters)
  - **8th Motorised Infantry Division, Xinjiang MD**
    - 13000 troops.
    - 1st & 2nd Independent Regiments (2800 troops each)
    - 12th & 13th Border Defence Regiments (2800 troops each)
    - Artillery Brigade

- Special Operations Brigade
- **11th Motorised Infantry Division, Xinjiang MD**
  - 13000 troops.
  - Will have Special Operations Brigade, Artillery Brigade and 3-4 infantry brigades
- Decommissioned: 47th Group Army
- **No naval fleet**
- **Air Assets**
  - 16th Fighter Brigade, Yinchuan, Ningxia. Ürümqi Base
    - J-11, Su-27SK, J-11BS Su-27UBK
  - 112th Fighter Brigade. Malan, Xinjiang. Ürümqi Base
    - Urumqi Base. J-7II, JJ-7A
  - 178th UAV Brigade??
  - 36th Bomber Division?? Wugong and Lintong Airbases
    - .H-6M/6K, Can launch 3-4 CJ-10
    - 108th Air Regiment
  - 4th Transport Division
    - 10th Air Regiment, Y-9
    - 11th Air Regiment, Y-9
    - 12th Air Regiment, Y-7, Y-7H, Y-20, Mi-17v
- **Air Bases**
  - Lanzhou
  - Urumqi
  - Xi'an Flying Academy

## **TIBET MILITARY DISTRICT**

PLA had 3 line brigades (52nd, 53rd and 54th mountain brigades) deployed in Tibet. 15th Airborne Corps from Wuhan was assigned in 2016-17 in response to Indian new mountain strike corps. It had 3 Divisions (43rd, 44th and 45th) which were reformed into 6 independent brigades (127th, 128th, 130th, 131st, 133rd and 134th). It'll also have a Special Operations Brigade, an aviation brigade and a Strategic Support Brigade (Communications and Engineering). Total of 9 independent brigades under one Corps HQ.

(XINJIANG MILITARY DISTRICT??)

- **15th Airborne Corps**
  - Not sure if still assigned to Tibet MD.
    - 127th (I) Brigade

- 128th (I) Brigade
- 130th (I) Brigade
- 131st (I) Brigade
- 133rd (I) Brigade
- 134th (I) Brigade
- Special Operations Brigade
- Strategic Support Brigade
- Aviation Brigade
  
- 52nd Mountain Motorised Infantry Brigade, Nyingchi (4600 troops)
  - Unit 77675, Mountain Infantry battalion. 700 troops.
  - Unit 77678, Artillery regiment. 1100 troops.
  - 1st Infantry Battalion. 700 troops
  - 2nd Infantry Battalion. 700 troops
  - 3rd Infantry Battalion. 700 troops
  - 4th Infantry Battalion. 700 troops
  
- 53rd Mountain Motorised Infantry Brigade, Lhasa/Nyingchi? (4600 troops)
  - Unit 77680, Mountain Infantry battalion. 700 troops.
  - Unit 77683, Artillery regiment. 1100 troops.
  - 1st Infantry Battalion. 700 troops
  - 2nd Infantry Battalion. 700 troops
  - 3rd Infantry Battalion. 700 troops
  - 4th Infantry Battalion. 700 troops
  
- 54th Mechanised Infantry Brigade, Lhasa (3000 troops)

#### More Independent Border Defence Brigades?

- 85th Special Operations Brigade
- 85th Army Aviation Brigade
- 85th Artillery Brigade
- 85th Air Defence Brigade
- 85th Engineering Brigade
- 7th Electronic Counter Measures Brigade
- 351st Border Defence Regiment
- 352nd Border Defence Regiment
- 353rd Border Defence Regiment
- 354th Border Defence Regiment
- 355th Border Defence Regiment
- 356th Border Defence Regiment
- 357th Border Defence Regiment
- 358th Border Defence Regiment

- 38th Mobile Police Division
- 41st Mobile Police Division
  
- 308th Artillery Brigade (3000 troops)

#### Independent Battalions ??

- Unit 77655, Gyantse County 1st (I) Infantry Battalion. Bhutan border. 700 troops.
- Unit 77656, Gangba County 2nd (I) Infantry Battalion. 700 troops
- Medog County 3rd (I) Infantry Battalion. 700 troops
- Milin 4th (I) Infantry Battalion. 700 troops
- Luoza County 5th (I) Infantry Battalion. Bhutan border. 700 troops
- Unit 77629, 1st Border Defense Regiment. 2800 troops. Bhutan & India Border
- Unit 77635, 2nd Border Defense Regiment. 2800 troops. Bhutan & India Border
- Unit 77639, 3rd Border Defense Regiment. 2800 troops. Nepal & India Border.
- Unit 77643, 4th Border Defense Regiment. 2800 troops. India Border.
- Unit 77646, 5th Border Defense Regiment. 2800 troops. Nepal Border
- Unit 77649, 6th Border Defense Regiment. India border, 2800 troops. Bhutan & India Border
  - Nathu La Outpost, 6th Border Defense Regiment.
- 9th Border Defense Regiment

### ● **SOUTHERN THEATER COMMAND.** Guangzhou, Guangdong

#### AREA OF OPERATIONS:

LAND: Hunan, Guangxi,, Hainan, Guangdong, Hong Kong and Macau. Laos and Myanmar borders.

MARITIME: South China Sea

#### NOTES

1. Rocket Force's 61 Base (Formerly 51 Base) is one of biggest bases for conventional missiles, most or all of which will be assigned to Eastern TC. But control of nuclear missiles will remain under direct control of CMC.
2. It will support Eastern TC in Taiwan theater

#### ○ **74th Group Army (Former 41st Group Army)**

- 1st Combined Arms Brigade
- 16th Combined Arms Brigade
- 125th Combined Arms Brigade
- 132nd Combined Arms Brigade

- 154th Combined Arms Brigade
- 163rd Combined Arms Brigade??
- 74th Artillery Brigade
- 74th Air Defence Brigade
- 74th Joint Logistics Support Brigade
- 74th Engineering Brigade
- 74th Special Operations Brigade
- **75th Group Army (Former 42nd Group Army)**
  - 18th Combined Arms Brigade (Formerly 18th Armoured Brigade of 14th GA)??
  - 31st Combined Arms Brigade
  - 32nd Combined Arms Brigade
  - 42nd Combined Arms Brigade89j-7d
  - 122nd Combined Arms Brigade
  - 123rd Combined Arms Brigade
  - 121st Air Assault (para??)
  - 75th Artillery Brigade
  - 75th Air Defence Brigade
  - 75th Joint Logistics Support Brigade
  - 75th Engineering Brigade
  - 75th Special Operations Brigade
- Decommissioned: 14th Group Army
- **South Sea Fleet (Naval)**
  - **Aircraft Carrier:** Shandong
  - **Landing Ships**
    - Type 072A. Yuting III class. 4800 t
      - 6 ships, Huading, Luoxiao, Daiyun, Wanyang, Laotie and Luhua
    - Type 072III. Yuting II class. 4800 t
      - 1 ship. Emei
    - Type 072II Yuting Class. 4170t
      - 3 ships. Donting, Helan, Liupan
    - Type 071 Amphibious Transport Dock, Yuzhao Class. 25000t
      - 5 ships. Kunlun, Jinggang, Changbai, Wuzhi and Qilian
  - **Destroyers**
    - Type 052D, Luyang III Class, 7500 t
      - 3 ships. Kunming, Changsha, Hefei, Yinchuan
    - Type 052C, Luyang II Class, 6300 t
      - 2 ships. Lanzhou and Haikou
    - Type 052B, Luyang I Class, 5900 t
      - 2 Ships, Guangzhou and Wuhan
    - Type 051B, Luhai Class, 6100 t
      - 1 Ship, Shenzhen
  - **Frigates**

- Type 054A, Jiangkai II Class. 4200 t
  - 10 ships. Huangshan, Hengyang, Yuncheng, Yulin, Hengshiu, Liuzhou, Yueyang, Sanya, Xuchang
- Type 053H3 Jiangwei II Class. 2400 t
  - 2 Ships. Xianning and Luoyang.
- Type 053H1 Jianghu Class. 2000 t
  - 3 Ships. Dandong, Shaoguan and Zhaotong
- **Corvettes**
  - Type 056, Jiangdao Class. 1500 t
    - 3 ships. Baise, Luzhao, Qingyuan.
  - Type 056A, Jiangdao Class. 1500 t
    - 17 ships. Suqian, Jingmen, Qujing, Liupanshui, Hanzhong, Guangyuan, Sunung, Nanchong, Bazhong, Wuzhou, Wenshan, Panzhihua, Ganzhou, Enshi, Guangan, Yongzhou, Suizhou
- **Fleet Replenishment**
  - Type 904B & A General Stores Issue Ship, Dayun Class. 15000 t
    - 4 Ships. Lugu, Jushan, Fuxian, Dongting
  - Type 903 & A replenishment ship, Fuchi I and II Class. 25000t
    - 3 Ships. Weishan, Hong, Luoma
  - Type 908 replenishment ship, Fusu Class. 37000 t
    - 1 Ship. Qinghai
- **Air Assets**
  - 4th Fighter Brigade, Foshan, Guangdong. Nanning Base.
    - Su-27SK, J-11, Su-27UBK.
  - 5th Fighter Brigade, Guilin, Guanxi. Nanning Base.
    - J-10B, J-10C. J-10S,
  - 6th Fighter Brigade, Suixi, Guangdong. Nanning Base.
    - Su-30MKK, Su-35S
  - 23rd Bomber Brigade. Leiyang, Hunan??
  - 25th Fighter Brigade, Shantou, Guangdong. Nanning Base.
    - J-7E
  - 26th Fighter Brigade, Huiyang, Guangdong. Nanning Base.
    - J-16.
  - 27th Fighter Brigade, Pulandian?Shantou, Guangdong. Nanning Base.
    - J-7D,
  - 52nd Fighter Brigade, Wuhan, Hubei. Nanning Base.
    - J-7G, JJ-7A.
  - 54th Fighter Brigade, Changsha, Hunan. Nanning Base.
    - Su-30MKK,
  - 96th Fighter Brigade, Dazu, Chongqing. Nanning Base.
    - J-7E, JJ-7A
  - 98th Fighter Brigade, Chongqing. Nanning Base.
    - Su-27S, Su-27U

- 99th Fighter Brigade, Chongqing . Nanning Base.
  - J-7IIM? JJ-7A
- 8th Bomber Division??
- 130th Fighter Brigade, Mengzi, Yunnan. Nanning Base.
  - J-10A, J-10SY
- 131st Fighter Brigade, Luliang, Shanxi. Nanning Base.
  - J-10B, J-10C J-10SY, JJ-7A
- 13th Transport Division
- 20th Special Missions Division
- Unmanned Attack Brigade, Yangtang??
  - J-6 Drones. 2nd Dadui.
- Transport & SAR Brigade. Guangzhou
  - Y-7, Z-8K, Z-9, Mi-17.
- Independent Helicopter Regiment. Hong Kong
  - Z-8KH, Z-9WZ, Z-9ZH.
- UAV Battalion
  - GJ-2 Wing Loong II. Mangshi.

- **Air Bases**

- Kunming
- Nanning

- **CENTRAL THEATER COMMAND.** Beijing

**AREA OF OPERATIONS:**

LAND: Beijing, Hebei, Shanxi and Tianjin.

MARITIME: South China Sea

**NOTES**

It has no naval fleet, but has a few naval training and aviation bases. Apparently it doesn't not have any naval vessels but controls a few other service branches of navy.

- **81st Group Army (Former 65th Group Army)**

- 7th Heavy Combined Arms Brigade
- 70th Light Combined Arms Brigade Tangshan Prefecture, Hebei Province
- 189th Medium Combined Arms Brigade
- 194th Combined Arms Brigade
- 195th Heavy Combined Army Brigade. Yutian County, Hebei Province
- 162nd Motorised Infantry Division??



- **82nd Group Army (Former 38th Group Army)**
  - 6th Heavy Combined Arms Brigade, Nankou Town Area, Changping District
  - 80th Medium Combined Arms Brigade
  - 151st Heavy Combined Arms Brigade
  - 188th Heavy Combined Army Brigade.
  - 196th Light Combined Arms Brigade.
  - 127th Light Mechanised Infantry Division??
- **83rd Group Army (Former 54th Group Army)**
  - 11th Heavy Combined Arms Brigade
  - 58th Medium Combined Arms Brigade, Xuchang Prefecture, Henan Province
  - 60th Medium Combined Arms Brigade, Xinyang Prefecture, Henan Province
  - 113th Combined Army Brigade. Baoding Prefecture, Hebei Province
  - 131st Combined Arms Brigade.
  - 193rd Medium Combined Arms Brigade.
- 3rd (I) Combined Arms Brigade (Former 3rd Motorised Infantry Brigade of 1st GA)
- 112nd (I) Mechanised Infantry Division (Formerly with 1st GA, operates Type-99A tanks)
- Decommissioned: 20th and 27th Group Army
- **No naval fleet**
- Air Assets
  - 19th Fighter Brigade. Jining, Shandong. Datong base.
    - J-11B, J-11BS
  - 43rd Fighter Brigade. Datong, Shanxi. Datong base.
    - J-10A, J-10SY
  - 44th Fighter Brigade. Hohhot, Inner Mongolia. Datong base.
    - J-7G, JJ-7A
  - 53rd Fighter Brigade. Hubei. Nanning base.
    - J-7IIM, JJ-7A
  - 55th Fighter Brigade. Jining, Shandong. Wuhan base.
    - J-11A, Su-27U
  - 56th Fighter Brigade. Zhengzhou, Henan. Wuhan base.
    - J-10B, J-10SY
  - 70th Fighter Brigade. Zunhua, Hebei. Wuhan base.
    - J-10A, J-10SY
  - 71st Fighter Brigade. Xishan, Beijing. Wuhan base.
    - J-7H, JJ-7A
  - 72nd Fighter Brigade. Tianjin. Wuhan base.
    - J-10C, J-10SY
  - 43rd Multirole Brigade
  - 44th Multirole Brigade

- **Air Bases**
  - Datong
  - Wuhan
  - Shijiazhuang Flying Academy

- **NORTHERN THEATER COMMAND.** Shenyang, Liaoning

**AREA OF OPERATIONS:**

LAND: Jilin, Heilongjiang and Shenyang and Inner Mongolia.

MARITIME: Bay of Korea

- **78th Group Army (Former 16th Group Army)**
  - 78th Special Combat Brigade (Formerly Special Operations Brigade of 16th GA)
  - ??
- **79th Group Army (Former 39th Group Army)**
  - ??
- **80th Group Army (Former 26th Group Army)**
  - 116th (I) Mechanised Infantry Division (Formerly with 39th GA)
  - ??
- **Decommissioned:** 40th Group Army
- **North Sea Fleet**
  - **Aircraft Carrier:** Liaoning
  - **Destroyers**
    - Type 055, Renhai Class (cruiser?) 13000t
      - 1 Ship. Nanchang
    - Type 052D, Luyang III Class. 7500 t
      - 6 ships. Xining, Urumqi, Guiyang, Chengdu, Qiqihar and Tangshan
    - Type 051C Luzhou Class. 7100 t
      - 2 Ships. Shenyang and Shijiazhuang
    - Type 052, Luhu Class. 4800 t
      - 2 Ships. Harbin and Qingdao
  - **Frigates**
    - Type 054A, Jiangkai II Class. 4200 t
      - 8 Ships. Yancheng, Linyi, Weifang, Daqing, Handan, Wuhu, Rizhao, Zaozhuang
    - Type 053H3, Jiangwei II Class. 2400 t
      - 2 Ships. Yichang and Huludao.

- **Corvettes**
  - Type 056 & A, Jiangdao Class. 1500 t
    - 14 ships. Datong, Yingkou, Weihai, Fishun, Zinyang, Huangshi, Qinhuangdao, Wuhai, Zhangye, Dingzhou, Zhangjiakou, Mudanjiang, Songyuan, Pingdingshan
- **Landing Ships**
  - Type 072A and 072III. Yuting III and II Class. 4800 t
    - 5 Ships. Tianzhu, Daqing, Yandang, Jiuhua and Huanggang.
- **Fleet Replenishment**
  - Type 903A replenishment ship, Fuchi II Class. 25000 t
    - 3 Ships. Tai, Dongping, Kekezili
- **Air Bases**
  - Dalian
  - Jinan
  - Harbin Flying Academy
- **Air Assets**
  - 1st Attack Brigade. Anshan, Liaoning. Dalian Base.
    - J-11B, J-11BS
  - 2nd Attack Brigade. Chifeng, Inner Mongolia. Dalian Base.
    - J-10A, J-10SY
  - 3rd Attack Brigade. Anshan, Liaoning. Dalian Base.
    - J-8F, JJ-7A
  - 15th Attack Brigade. Weifang, Shandong. Jinan Base.
    - JH-7A
  - 31st Attack Brigade. Siping, Jilin. Dalian Base.
    - JH-7A
  - 32nd Attack Brigade. Dalian, Liaodong. Dalian Base.
    - Q-5N?, Q-5J
  - 34th Fighter Brigade. Gongzhuling, Jilin. Jinan Base.
    - J-10A, J-10SY
  - 35th Fighter Brigade. Qihe, Shandong. Jinan Base.
    - J-8B, JJ-7A
  - 36th Fighter Brigade. Gaomi, Shandong. Jinan Base.
    - J-10A, J-10SY
  - 57th Fighter Brigade. Shanqiu, Henan. Jinan Base.
    - J-11B, Su-27SK
  - 61st Fighter Brigade. Yanji, Jilin
    - J-10B, J-10SY
  - 63rd Fighter Brigade. Mudanjiang, Heilongjiang. Dalian Base.
    - J-7H?, JJ-7A
  - 16th Special Missions Division

- **EASTERN THEATER COMMAND.** Nanjing, Jiangsu

**AREA OF OPERATIONS:**

LAND: Shanghai, Jiangsu, Zhejiang, Anhui, Fujian and Jianxi

MARITIME: East China Sea and Taiwan.

**NOTES**

1. Rocket Force's 61 Base (Formerly 51 Base) is one of biggest bases for conventional missiles, most or all of which will be assigned to Eastern TC. But control of nuclear missiles will remain under direct control of CMC.
2. East Fleet Commander will serve as deputy theater commander and commander of all naval forces in Eastern TC.

- **73rd Group Army (Former 31st Group Army)**

- 3rd Combined Arms Brigade (Formerly 3rd Motorised Infantry Brigade of 31st GA)
- 14th Combined Arms Brigade (Formerly 14th Amphibious Armoured Brigade)
- 86th Combined Arms Brigade (Formerly 86th Motorised Division)
- 91st Combined Arms Brigade (91st Motorized Infantry Division of 31st GA)
- 92nd Combined Arms Brigade
- 163rd Combined Arms Brigade
- 73rd Artillery Brigade
- 73rd Air Defence Brigade
- 73rd Special Operations Brigade

- **71st Group Army (Former 12th Group Army)**

- 2nd Combined Arms Brigade
- 35th Combined Arms Brigade
- 160th Combined Arms Brigade
- 178th Combined Arms Brigade
- 179th Combined Arms Brigade
- 235th Combined Arms Brigade
- 71st Artillery Brigade
- 71st Air Defence Brigade

- **72nd Group Army (Former 1st Group Army)**

- 5th Combined Arms Brigade
- 10th Combined Arms Brigade
- 34th Combined Arms Brigade ((Formerly 86th Mechanised Infantry Brigade of 12th GA)
- 85th Combined Arms Brigade
- 90th Combined Arms Brigade
- 124th Combined Arms Brigade

- 72nd Artillery Brigade
- 72nd Air Defence Brigade
  
- **East Sea Fleet (Naval)**
  - **Destroyers**
    - Type 052D, Luyang III Class. 7500 t
      - 4 ships. Xiamen, Nanjing, Taiyun and Zibo
    - Type 052C, Luyang II Class. 6500 t
      - 4 ships. Changchun, ZHengzhou, Jinan and Xi'an.
    - Type 051C Luzhou Class. 7100 t
      - 2 Ships. Shenyang and Shijiazhuang
    - Sovremenny, Sovremenny Class. 7900 t
      - 4 Ships. Hangzhou, Fuzhou, Taizhou and Ningbo
  - **Frigates**
    - Type 054A, Jiangkai II Class. 4200 t
      - 13 Ships. Zuzhou, Zhoushan, Yiyang, Changzhou, Huanggang, Yangzhou, Jingzhou, Binzhou Anyang, Nantong, Ma'anshan and Wenzhou
    - Type 053H3, Jiangwei II Class. 2400 t
      - 3 Ships. Sanming, Zlangyang, Huaihua
    - Type 053H1G Jiangwei II Class. 2000 t
      - 4 ships. Beihai, Dongguan, SHantou and Foshan.
  - **Corvettes**
    - Type 056 & A, Jiangdao Class. 1500 t
      - 25 ships. Bengbu, Shangrao, Ji'an, Jieyang, Quanzhou, CHaozhou, Suzhou, Huaian, Heze, Baoding, Ningde, Sanmenxia, Zhuzou, Tongren, Ezhou, Yiwu, Xuancheng, Yichun, Deyang, SHuo Zhou, Luan, Liaocheng, Luan, Liaocheng, Taian, Jingdezhen and Xiaogan
  - **Fleet Replenishment**
    - Type 903 & A replenishment ship, Fuchi II Class. 25000 t
      - 3 Ships. Qiandao, Chao and Gaoyo.
  
- **Air Assets**
  - 10th Bomber Division.
  - 7th Fighter Brigade. Wuhu, Anhui. Shanghai base.
    - J-16
  - 8th Fighter Brigade. Changxing, Chejiang. Shanghai base.
    - J-10A, J-10SY
  - 9th Fighter Brigade. Wuhu, Anhui. Shanghai base.
    - J-20, SU-30MKK
  - 40th Fighter Brigade. Nanchang, Jiangxi. Fuzhou base.
    - J-16
  - 41st Fighter Brigade. Wuyishan, Fujian. Fuzhou base.

- J-11A/B, SU-27U
  - 42nd Fighter Brigade. Zhangshu, Jiangxi. Fuzhou base.
    - J-7EG, JJ-7A
  - 26th Special Mission Division
  - 83rd Attack Brigade. Hangzhou, Zhejiang. Shanghai base.
    - JH-7A, Q-5J
  - 180th UAV?. Liangcheng, Fujiang. Fuzhou base.
    - J-6W Drones.
- **Air Bases**
  - Fuzhou
  - Shanghai

## PLA ROCKET FORCE

Formerly 2nd Artillery Corps, PLA Rocket Force is now considered a separate service branch in itself with 90,000 to 1,20,000 personnel. It seems like the TC in their respective areas may command some of the resources of certain units belonging to PLARF. Its HQ is located at the Qinghe Compound in Beijing

This command is led by a full general and theater leader grade officer is assigned as Political Commissar. 6 Army Leader grade officers command 6 bases (or armies) numbered 61-66 with subordinate launch brigades and regiments. There is a Base 67 (formerly Force 22) which stockpiles nuclear weapons. Base 61 operates only conventional missiles. There are between 90000 to 1,20,000 personnel.

There are 3 training bases and 1 engineering base.

- Missile Base Structure: Each such base has a local HQ with multiple launch units.
  - 3-5 Missile Brigades
    - Launch Battalions and/or Launch Companies. They can operate mobile or silo based missiles. Some have cave storage to launch site system .

Each brigade may have hundreds or just a handful of missiles depending upon its role. Conventional missile brigades usually have a larger number of missiles with up to 30-36 launchers with 2-6 missiles on each. Nuclear missile brigades usually have 6-8 missile launchers or silos or cave sites.

NOTE: It's not clear whether anti-satellite and BMD assets are with PLARF or SSF.

## MISSILE BASES

- **Base 61. HQ at Huangshan, Anhui**
  - 611 Brigade, Chizhou. DF-21

- 612 Brigade, Jingdezhen. DF-21A
- 613 Brigade, Shangaro, DF-15B
- 614 Brigade, Yon'gan. DF-11A
- 615 Brigade, Meizhou, DF-11A
- 616 Brigade, Ganzhou. DF-15
- 617 Brigade, Jinhua. DF-15
- **Base 62. HQ at Kumming, Yunnan.**
  - 621 Brigade, Yibin. DF-21A
  - 622 Brigade, Yuxi. DF-31A
  - 623 Brigade, Liuzhou. DH-10A
  - 624 Brigade, Qingyuan DF-21D
  - 625 Brigade, Jianshui. DF-21??
  - 626 Brigade, Qingyuan, DF-21C/D, DF-26 ??
  - 627 Brigade??, Puning?? ???
- **Base 63, HQ at Huaihua, Hunan.**
  - 631 Brigade, Jingzhou. DF-5B
  - 632 Brigade, Shaoyang. DF-31
  - 633 Brigade, Huitong. DF-5A.
  - 634 Brigade, ?? ???
  - 635 Brigade, Yichun. DH-10
  - 636 Brigade. Shaoguan. DF-16
  - 637 Brigade ?? ???
- **Base 64, Lanzhou.**
  - 641 Brigade, Hancheng. DF-31
  - 642 Brigade, Datong. DF-31A
  - 643 Brigade, Tianshui, DF-31A
  - 644 Brigade, Hanzhong. ??
  - 645 Brigade, ??? ??
  - 646 Brigade, Korle. DF-21B/C??
- **Base 65, Shenyang**
  - 651 Brigade, Dalian. DF-21
  - 652 Brigade, Tonghua. DF-21C/D??
  - 653 Brigade. Laiwu. DF-21C
  - 654 Brigade. Dalian.??
- **Base 66, Luoyang**
  - 661 Brigade, Lingbao. DF-5B
  - 662 Brigade, Luanchuan. DF-4 or DF-5A
  - 663 Brigade, Nanyang. DF-31A
  - 664 Brigade Luoyang. ??
  - 665 Brigade ?? ??
  - 666 Brigade, Xinyang. DF-26
- **Base 67, Baoji**  
Nuclear tipped missiles

## CHINESE MISSILES

NAME	NUMBERS	RANGE (km)	STORAGE	PROPULSION	NOTES
<b>BALLISTIC MISSILES</b>					
DF-21	40-50	1700	Road mobile	Solid	
DF-21A	40-50	1700	Road mobile	Solid	
DF-21C	25-30	1700	Road mobile	Solid	
DF-21D		1500	Road Mobile	Solid	Anti ship
DF-26	16-20	4-5000	Road mobile	Solid	
DF-31	6-10	7000+	Road mobile	Solid	
DF-31A	15-20	11000+	Road Mobile	Solid	
DF-41	??	15000	Road mobile	Solid	Under development
DF-3A	10-15??	3000	Road mobile	Liquid	Old
DF-4	10-15	5500	Silo	Liquid	Old
DF-5A	15-20	12000+	Silo	Liquid	
DF-15/M-9	90-100	600	Road mobile	Solid	
DF-15A		850	Road Mobile	Solid	
DF-15B		750	Road Mobile	Solid	
DF-16		800	Road Mobile	Solid	
DF-11/M-11	100-140	300	Road Mobile	Solid	
DF-11A		600	Road mobile	Solid	
JL-1	??	1700	SLBM	Solid	Retired?
JL-2	48	7000	SLBM	Solid	Type 094 submarines
<b>CRUISE MISSILES</b>					
CJ-10/DH-10	40-90	1500	Multiple	Subsonic	LACM



	launchers. Upto 550 missiles				
YJ-63/KD-63		200	Air, H6 bomber	Subsonic	LACM
KD-88		200	Air	Subsonic	
YJ-18		220-240	Multiple	Supersonic in Terminal	AShM, LACM
YJ-62		290-400	Multiple	Subsonic	AShM
YJ-7		25	Multiple	Subsonic	AShM
YJ-8/C-801		42	Multiple	Subsonic	AShM
YJ-82		42	Submarine	Subsonic	AShM
YJ-83		120	Multiple	Subsonic	AShM
YJ-83A/J		180	Multiple	Subsonic	AShM
YJ-91/KH-31 P		110	Multiple	Supersonic	AShM, LACM Anti-radiation
YJ-100/KD-2 0		1500-2000	Air??/Land	Subsonic	LACM
AS-13/KH-59 MK		115	Su-30MKK	Subsonic	AShM, LACM
SS-N-22 Moskit		240	Sovremenny ships	Supersonic	AShM, LACM
SS-N-27B Kalibr		200	Kilo Submarine	Supersonic	AShM, LACM
Changfeng		800	Land	Subsonic	LACM

## PLA AIR FORCE ORBAT & STRUCTURE

PLAAF started creation of Air Brigade structure by upgrading 14 existing Air Regiment (AR) HQs and abolished 4 existing Air Division HQs.

New Command Structure for fighter and bomber planes is as following:

**PLAAF HQ**  
**MRAF HQ**  
**Base**  
**Air Brigade**  
**Flight Group**  
**Flight Squadron**

Under this system, heavy bombers, transport and most of special mission aircraft (like refuellers?) air divisions are attached to PLAAF HQ, but tactical control most likely lies with the theater commander (??). For fighters and ground attack jets. The new system puts them in independent brigade unit structure with no divisional HQ control.

### AIR COMBAT BRIGADE STRUCTURE

- 24 Aircraft + Trainers + 6 spares divided in 3-5 battalion grade flight groups (FG). Most brigades have 3 rather than 5 FGs.
- Some air brigades with foreign aircraft like Su-27 don't have any spares.
- Training and some specialised brigades may have different structures.
- Table below shows structure of PLAAF in 2011 before it's reorganisation in 2016-2017

MRAF	DIVISIONS	BASE	LOCATIONS	AIRCRAFT
Western	109th, 110th & 111st	Urumqi	Changi, Xinjiang. Urumqi, Xinjiang. Korla, Xinjiang.	J-8H, JJ-7A J-7, JJ-7, JH-7A J-11B
Eastern	78th, 85th, 86th & 93rd	Shanghai	Shanghai, Guangxi. Quzhou, Zhejiang. Rugao, Jiangsu, Suzhou, Jiangsu	J-8, JJ-7. SU-30 J-7, JJ-7 J-8, JJ-7
Southern	124th, 125th & 126th	Nanning	Baise, Tianyang. Nanning, Guangxi Liuzhou, Guangxi.	J-7, J-10. J-7, J-8H. J7, JH7A.
Northern	88th, 89th, 90th & 91st	Dalian	Dandong, Liaoning. Pulandian, Liaoning. Wafangdian, Liaoning. Liuhe, Jilin.	J-7E, JJ-7A. J-11B, SU-27U. Q-5D & Q-5J. J7, J-11B, SU-27U

TABLE: AIR BRIGADES in 2011-12

- Majority of J-7 were being phased out.

### Changes in 2017 and Later

- In 2018, 80 more air brigades were created bringing the total to 94.
- 59?? of these are fighter and ground attack jets. Rest 35? are transport, bombers, refuellers, AWACS(?) which are attached to TCs, PLAAF HQ and training establishments.

TCAF	BRIGADES	BASES	LOCATION	AIRCRAFT
Western	16th.	Lanzhou.	Yinchuan, Ningxia.	SU-35S, J-11, U-27SK/UBK.
	112nd.	Urumqi.	Malan, Xinjiang,	J-7II, JJ-7A.
	178th.	Urumqi.	Malan, Xinjiang.	J-7II, JJ-7A, UAVs
Eastern	7th	Shanghai	Wuhu, Anhui.	J-16.
	8th	Shanghai	Changxing, Chejiang	J-10A, J-10SY.
	9th	Shanghai	Wuhu, Anhui.	J-20, SU-30MKK.
	40th	Fuzhou	Nanchang, Jiangxi.	J-16.
	41st	Fuzhou	Wuyishan, Fujian.	J-11A/B, SU-27U
	42nd	Fuzhou	Zhangshu, Jiangxi.	J-7EG, JJ-7A.
	83rd	Shanghai	Hangzhou, Zhejiang,	JH-7A, Q-5J.
	180th	Fuzhou	Liangcheng, Fujiang.	J-6W (Attack drones)??
Central	19th	Datong.	Jining, Shandong.	J-11B, J-11BS.
	43rd	Datong.	Datong, Shanzi.	J-10A, J-10SY.
	44th	Datong.	Hohhot, Inner Mong.	J-7G, JJ-7A.
	53rd	Nanning.	Hubei .	J-7IIM, JJ-7A,
	55th	Wuhan.	Jining, Shandong.	J-11A, SU-7U.
	56th	Wuhan.	Zhengzhou, Henan.	J-10B, J-10SY.
	70th	Wuhan	Zunhua, Hebei.	J-10A, J-10SY
	71st	Wuhan.	Xishan, Beijing.	J-7H, JJ-7A.
	72nd	Wuhan.	Tianjin.	J-10C, J-10SY.

Northern	1st	Dalian	Anshan, Liaoning	J-11B, J-11BS.
	2nd	Dalian	Chifeng, Inner Mon.	J-10A, J-10SY.
	3rd	Dalian.	Anshan, Liaoning	J-8F, JJ-7A.
	15th	Jinan.	Weifang, Shandong	JH-7A
	31st	Dalian.	Siping, Jilin Dalian	JH-7A
	32nd	Dalian.	Liaodong	Q-5N, Q-5J
	34th	Jinan.	Gongzhuling, Jilin	J-10A, J-10SY
	35th	Jinan.	Qihe, Shandong	J-8B, JJ-7A
	36th	Jinan.	Gaomi, Shandong	J-10A, J-10SY
	57th	Jinan.	Shanqiu, Henan Yanji	J-11B, Su-27SK
	61st	Jinan.	Jilin Mudanjiang,	J-10B, J-10SY
	63rd	Dailan	Heilongjiang	J-7H, J-10SY
Southern	4th	Nanning	Foshan, Guangdong	J-8DF, JJ-7A
	5th	Nanning	Guilin, Guanxi.	J-10B/C, J-10SY
	6th	Nanning	Suixi, Guangdong.	Su-27, Su-35
	23rd	Nanning	Leiyang, Hunan.	H-6U
	25th	Nanning	Shantou, Guangdong	J-7E, JJ-7A
	26th	Nanning	Huiyang, Guangdong.	J-10A, J-10S
	27th	Nanning	Shantou, Guangdong	J-7D, JJ-7A
	52nd	Nanning	Wuhan, Hubei.	J-7H, JJ-7A
	54th	Nanning	Changsha, Hunan.	Su-30MKK
	96th	Kunming	Dazu, Chongqing.	J-7E, JJ-7A
	98th	Kunming	Chongqing.	Su-27S, Su-27U
	99th	Kunming	Chongqing	J-7IIM?, JJ-7A
	130th	Kunming	Mengzi, Yunnan.	J-10A, J-10SY

	131st	Kunming	Luliang, Shanxi.	J-10B, J-10C J-10SY, JJ-7A
--	-------	---------	------------------	----------------------------

TABLE: Current structure of PLAAF under new Theater Command structure.

HQ	BRIGADE	LOCATION	AIRCRAFT
PLAAF	Tpt & SAR.	??	Z-8K, Mi-171, Y-5C, Y-.7
	UAV	Xingtai, Hebei	BZK-007, EA-01, GJ-1
	65th	Dingxin, Gansu	WD-1, WJ-1.
	66th.	Dingxin, Gansu	Multiple
	67th.	Dingxin, Gansu	J-16.
	151st	Cangzhou, Hebei	J-11B, JL-9.
	170th.	Cangzhou, Hebei	UAV
	171st	Jiugucheng, Jinan	J-10B, J-10S.
	172nd	Cangzhou, Hebei	J-11BS, J-7E, JL-9,
	??	??	J-16, Su-30, JL-10
Airborne Corps	Aviation.	Yingshan, Hubei	Y-5, Y-7, Y-8, Y-12
	Helicopter SOF.	Yingshan, Hubei	Z-8KA, Z-9WA, Z-10K
Western TCAF	Tpt & SAR	Lanzhou, Gansu	Z-8K, Mi-171, Y-5C, Y-7H
Eastern TCAF	95th Tpt.	Luanyungang, Jsu	J-11B, J-11BS.
	?? Training	Xushou, Jiangsu	JJ-7, JJ-7A.
	?? Tpt & SAR,	Nanjing, Jiangsu	Z-8K, Mi-171, Y-5A/C, Y-7
Southern TCAF	132nd Tpt& Training.	Gongzhuling, Jilin.	JJ-7, J-7II.
	?? Tpt & SAR.	??	Z-8K, Mi-171, Y-5C, Y-7

Central TCAF	?? Tpt & SAR	??	Z-8K, Mi-171, Y-5C, Y-7
Northern TCAF	33rd Tpt & Trng.	Dali, Yunnan.	JJ-7, J-7I.
	151st UAV.	Cangzhou, Hebei.	BZK-007, EA-03.
	Tpt & SAR.	Xintai, Hebei.	Z-8K, Mi-171, Y-5, Y-7, Z-9

Tpt:- Transport

Trng:- Training

### PLAAF AIRCRAFT INVENTORY

These numbers are from 2018-2019 and may have changed by the time of writing this article in Dec 2020.

MODEL	ROLE	NUMBERS
J-10B, J-10C	Multirole	128+83
J-11, J-11A, J-11B, J-11BS	Multirole	50+86+134+159
J-20	Stealth	33
Su-30MKK	Multirole	74
Su-35S	Multirole	24
JH-7A	Strike	219
Q-5L & Q-5N	Strike	42+42
J-16	Strike	89
J-8D, J-8F, J-8H	Interceptor	14+128+80
J-7IIM, J-7D, J-7E, J-7EH, J-7G, J-7H	Fighter	58+52+174+10+82+184
J-10, J-10A	Fighter	31+254
Su-27SK	Fighter	20
H-6H, H-6K, H-6M	Bomber	62+92+35

KJ-200, KKJ-500, KJ-2000	AWACS	4+3+4
Tu-154MD, Y-8CA, Y-8GX4	ELINT	10+1+8
Y-8CB, Y-8G	EW	4+7
JZ-8, JZ-8F	Photo recon + Armed Recon	8+72
H-6U, HY-6	Tanker	12+12
Z-9C	Attack helicopter	48
Z-10K	Attack Helicopter	7
Y-8, Y-8C	Transport	71+23
Y-5, Y-5A, Y-5B, Y-5C	Transport	8+74+116+6
Y-7-100, Y-7-200, Y-7G,	Transport	8+62+78
Z-8	SAR, Transport	65
Z-9	Transport	36
Mi-17	Transport Helicopter	70

## **STRATEGIC SUPPORT FORCE**

This organisation seems to be heavily influenced by US Cyber Command and US Strategic Command. SSF was formed using Space, Cyber and Electronic Warfare units from CMC's General Political Department GPD (formerly General Staff Department GSD), Political Work Department PWD (formerly General Political Department GPD), Equipment Development Department EDD (formerly General Armament Department GAD) and Logistics Support Department LSD (formerly General Logistics Department GLD). It's also believed that some of the functions of these departments have been transferred to some PLA units too.

Chinese doctrine places emphasis on what they claim to be multi-dimensional war fighting capabilities which include new ways of non-kinetic warfare which include hacking of computer networks, space warfare, psychological warfare, political warfare, propaganda, data theft and espionage. In this regard, it's more than just likely that CMC is actively indulging in corporate data theft as a way of warfare through Chinese companies and overseas citizens.

In peacetime, SSF is commanded by CMC's Joint Staff Department Operations Bureau or it's Joint Operations Command Center.

## **BASIC STRUCTURE OF SSF**

- **Strategic Support Force**
  - Staff Department
  - Logistics Department
  - Equipment Department
  - Space Systems Department
  - Network Systems Department
  - Political Work Department.

## **SSF Space Systems Department Units**

### **Space Launch & Support**

- Jiuquan Satellite Launch Center  
20th Testing and Training Base  
Oldest and largest launch site, sole base for human spaceflight launches.
- Taiyuan Satellite Launch Center  
25th Testing and Training Base  
Satellites for sun-synchronous and low-earth orbits.
- Xichang Satellite Launch Center  
27th Testing and Training Base  
Geosynchronous satellites. Maintains mobile tracking stations.
- Wenchang Aerospace Launch Site  
Long March 5 heavy rockets and National Defense University.

### **Space Base C4ISR**

- Aerospace Reconnaissance Bureau : Space based surveillance, reconnaissance and intelligence gathering.
- Satellite Communications Main Station: Space based communications.
- Satellite Positioning Main Station: Military use of Beidou navigation System

### **Telemetry Tracking and Control (TT&C)**

- 23rd Test & Training Base.
- 26th Testing and Training Base.
- Xi'an Satellite Control Center: Telemetry, tracking and control network
- Beijing Aerospace Flight Control Center : Manned spaceflight program
- China Satellite Maritime Tracking & Control Department: Maritime TT&C for space launches & ICBM tests. Has Yuanwang tracking ship.



## SSF Network Systems Departments Units

- **Operations & Administration**
  - Regional Satellite Station, Hainan (Could be in SSD)
  - Satellite Main Station, Beijing (Could be in SSD)
  - Electronic Countermeasure Center
  - Beidaihe ECM Brigade Detachment
  - Langfang ECM Brigade Detachment, Yingtan
  - Electronic Countermeasure Brigade, Langfang
  - Electronic Countermeasure Brigade, Beidaihe
  - 4th PLA HQ. (Transferred to JSD as Network Electronic Bureau)
- **54th Research Institute**
- **Electrical Engineering Institute.** (Renamed National University of Defense Technology Electronic Countermeasures Institute)

## LOGISTICS

In March 2016, PLA renamed General Logistics Department (GLD) as CMC's Logistics Support Department (LSD) and created Joint Logistics Support Force (JLSF). Logistics management which includes training infrastructure and resource management is now done by LSD. JLSF plans and executes integrated joint logistics support for combat.

- **Central Military Commission (CMC)**
  - Wuhan Joint Logistics Support Base
    - Wuxi Joint Logistics Support Centre (Eastern TC)
    - Guilin Joint Logistics Support Centre (Southern TC)
    - Xining Joint Logistics Support Centre (Western TC)
    - Shenyang Joint Logistics Support Centre (Northern TC)
    - Zhengzhou Joint Logistics Support Centre (Central TC)

## REFERENCES:

1. A Potent Vector: Assessing Chinese Cruise Missile Developments By Dennis M. Gormley, Andrew S. Erickson, and Jingdong Yuan  
<https://ndupress.ndu.edu/Media/News/News-Article-View/Article/577568/jfq-75-a-potent-vector-assessing-chinese-cruise-missile-developments/>
2. Book: Chairman Xi Remakes The PLA: Assessing Chinese Military Reforms
3. China's Eagle Strike-Eight Anti-Ship Cruise Missiles: YJ-81, YJ-82, and C802  
CHRISTOPHER P. CARLSON  
[https://www.defensemedianetwork.com/stories/chinas-eagle-strike-eight-anti-ship-cruise-missiles-yj-81-yj-82-and-c802/](https://www.defensemmedianetwork.com/stories/chinas-eagle-strike-eight-anti-ship-cruise-missiles-yj-81-yj-82-and-c802/)

4. China Military Power Report 2009  
[https://web.archive.org/web/20150612120406/http://www.defense.gov/pubs/pdfs/China\\_Military\\_Power\\_Report\\_2009.pdf](https://web.archive.org/web/20150612120406/http://www.defense.gov/pubs/pdfs/China_Military_Power_Report_2009.pdf)
5. Impact Of PLA: New Theatre Commands August 05, 2017; By: Maj Gen P K Chakravorty (Retired) <https://bharatshakti.in/impact-of-plas-new-theatre-commands/>
6. China Naval Modernization: Implications for U.S. Navy Capabilities—Background and Issues for Congress <https://fas.org/sgp/crs/row/RL33153.pdf>
7. PLA Orbat reform update (Jun 2017)  
<https://china-defense.blogspot.com/2017/06/pla-orbat-reform-update-jun-2017.html>
8. A NEW PLA FORCE STRUCTURE Dennis J. Blasko  
[https://www.rand.org/content/dam/rand/pubs/conf\\_proceedings/CF145/CF145.chap13.pdf](https://www.rand.org/content/dam/rand/pubs/conf_proceedings/CF145/CF145.chap13.pdf)
9. CHINA'S GLOBAL NAVAL STRATEGY AND EXPANDING FORCE STRUCTURE  
<https://digital-commons.usnwc.edu/cgi/viewcontent.cgi?article=7871&context=nwc-review>
10. How is China Modernizing its Navy?  
<https://chinapower.csis.org/china-naval-modernization/>
11. Military Digest | Detailed Order of Battle: Chinese Forces in Eastern Ladakh  
<https://indianexpress.com/article/india/military-digest-detailed-order-of-battle-chinese-forces-in-eastern-ladakh-6513871/>
12. Border dispute: China has 200,000 troops at LAC in conflict-ready mode  
[https://www.business-standard.com/article/current-affairs/border-dispute-china-has-200-000-troops-at-lac-in-conflict-ready-mode-120072000052\\_1.html](https://www.business-standard.com/article/current-affairs/border-dispute-china-has-200-000-troops-at-lac-in-conflict-ready-mode-120072000052_1.html)
13. The Pak-China twin winter-offensive? Part-1  
<https://timesofindia.indiatimes.com/blogs/rakshakindia/the-pak-china-twin-winter-offensive-part-1/>
14. The Strategic Postures of China and India: A Visual Guide Frank O'Donnell Alex Bollfrass  
<https://www.belfercenter.org/sites/default/files/2020-03/india-china-postures/China%20India%20Postures%20-%20Tables.pdf>
15. China's National Defense in the New Era  
[http://eng.chinamil.com.cn/view/2019-07/24/content\\_9567379.htm](http://eng.chinamil.com.cn/view/2019-07/24/content_9567379.htm)
16. China's Cruise Missile Capabilities: Implications for the Indian Army and Air Force  
<https://www.orfonline.org/research/chinas-cruise-missile-capabilities/>
17. Air and Space Power with Chinese Characteristics  
[https://www.airuniversity.af.edu/Portals/10/ASPJ/journals/Volume-34\\_Issue-1/F-McCabe.pdf](https://www.airuniversity.af.edu/Portals/10/ASPJ/journals/Volume-34_Issue-1/F-McCabe.pdf)
18. Brigadization of the PLA Air Force  
[https://www.airuniversity.af.edu/Portals/10/CASI/documents/Brigade\\_paper.pdf?ver=2020-06-14-133411-607](https://www.airuniversity.af.edu/Portals/10/CASI/documents/Brigade_paper.pdf?ver=2020-06-14-133411-607)
19. People's Liberation Army Operational Concepts  
[https://www.rand.org/content/dam/rand/pubs/research\\_reports/RRA300/RRA394-1/RAND\\_RRA394-1.pdf](https://www.rand.org/content/dam/rand/pubs/research_reports/RRA300/RRA394-1/RAND_RRA394-1.pdf)
20. The PLA as Organization v2.0. - Dtic <https://apps.dtic.mil/sti/pdfs/AD1082742.pdf>

21. People's Liberation Army Operational Concepts

[https://www.rand.org/content/dam/rand/pubs/research\\_reports/RRA300/RRA394-1/RAND\\_RRA394-1.pdf](https://www.rand.org/content/dam/rand/pubs/research_reports/RRA300/RRA394-1/RAND_RRA394-1.pdf)